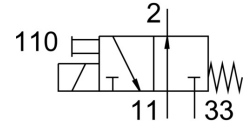
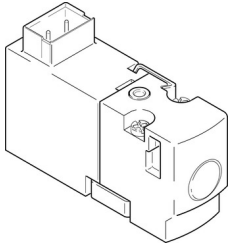


Air solenoid valve MHA1-M1H-3/20-0,6-TC

FESTO

Part number: 197023



Data sheet

Feature	Value
Valve function	3/2, open, monostable
Actuation type	Electrical
Width	10 mm
Standard nominal flow rate	10 l/min
Pneumatic working port	Sub-base
Operating voltage	24V DC
Operating pressure	0 bar ... 6 bar
Structural design	Poppet valve with return spring
Reset method	Mechanical spring
Degree of protection	IP40
Certification	c UL us - Recognized (OL)
Certificate issuing authority	UL MH19482
Nominal width	0.7 mm
Width dimension	10 mm
Type code	MHA1
Exhaust air function	With flow control option
Sealing principle	Soft
Mounting position	Any
Manual override	Non-detenting
Type of control	Direct
Flow direction	Non-reversible
Symbol	00991322
Valve position ID	Label
Lap	Underlap
Note on forced dynamization	Switching frequency at least once a week
Max. switching frequency	20 Hz
Switching time off	4 ms
On switching time	4 ms
Duty cycle	100%
Electrical power consumption	1 W
Max. positive test pulse with 0 signal	500 µs
Max. negative test pulse on 1 signal	400 µs
Coil characteristics	24 V DC: 1.0 W
Permissible voltage fluctuations	+/- 10 %
Operating medium	Compressed air as per ISO 8573-1:2010 [7:4:4]
Information on operating and pilot media	Operation with oil lubrication possible (required for further use)

Feature	Value
Vibration resistance	Transport application test with severity level 2 as per FN 942017-4 and EN 60068-2-6
Shock resistance	Shock test with severity level 2 as per FN 942017-5 and EN 60068-2-27
Corrosion resistance class (CRC)	2 - Moderate corrosion stress
Storage temperature	-20 °C ... 60 °C
Temperature of medium	-5 °C ... 40 °C
Ambient temperature	-5 °C ... 40 °C
Product weight	10 g
Electrical connection	Plug
Type of mounting	On sub-base With through-hole
Pneumatic connection 11	Sub-base
Pneumatic connection 2	Sub-base
Pneumatic connection 33	Sub-base
Note on materials	Free of copper and PTFE RoHS-compliant
Seals material	FPM HNBR NBR
Housing material	PA-reinforced PPS-reinforced